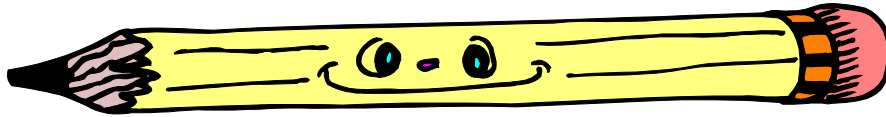


I'm the Artist!

Children's Category



Step-by-step, you are going to write a song.

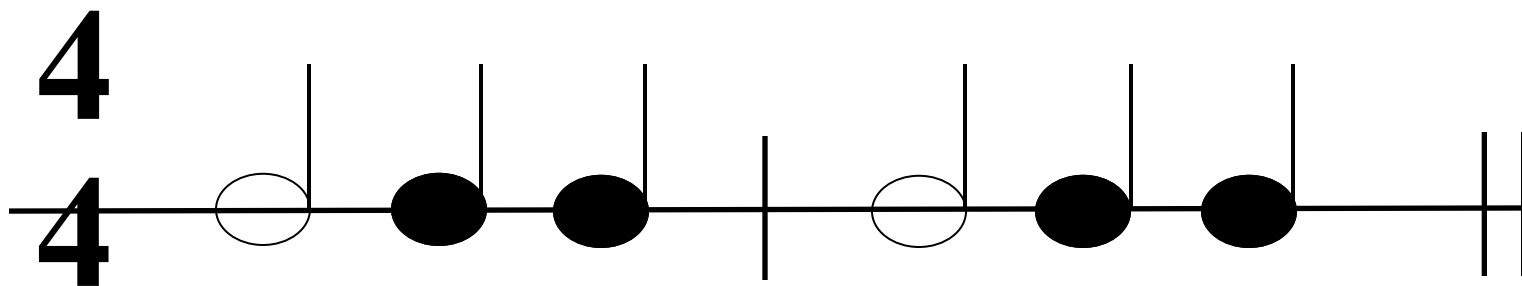
For this category, we are providing the topic, the rhythm pattern and guidelines for lyrics. Every other decision is made by you, the creator! (Remember, adults can guide, but all the work must be YOURS!)

Basic Composing Steps: *(Be sure to view step-by-step instructions)*

1. What structure will I use? Treble clef only, bass clef only, or grand staff. What will be my time signature? 3/4 time or 4/4? Once you have made these decisions, write your Clef Signs and Time Signature on your staff lines.
2. Using the rhythm pattern given, and keeping with the Theme for this category, write two sentences that fits the pattern. You might consider printing the rhythm pattern to use as a worksheet.
3. Select your melody notes and write them onto your staff paper, carefully following the rhythm pattern guide. If you are using the grand staff, write your bass chords. Practice your song at the piano until you have it just like you want it!
4. Write your lyrics for your sentences under the corresponding notes on your staff paper.
5. Draw a double bar line at the end.
6. Select a title for your song and write it, along with your name, at the top.
7. Practice your song until mastered, then submit your entry! Have fun!

I've Got Rhythm

Pattern One



I've Got Rhythm

Pattern Two

